

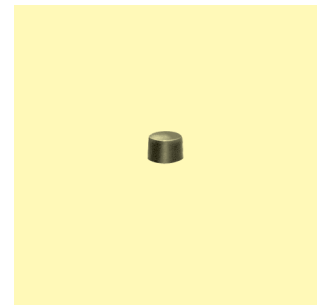
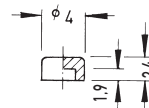
Specifications:

Contact rating:	max. 28 V DC, 0.4 VA min. 20 mV DC, 1 μ A
Contact resistance:	< 100 m Ω
Insulation resistance:	> 500 M Ω at 250 V DC
Dielectric strength:	250 V, 50 Hz for the duration of 1 minute
Operating temperature:	- 40 °C to + 85 °C
Mechanical life:	minimum 30 000 operations
Contacts:	phosphor bronze, gold-plated
Terminals:	PC terminals, crimped, phosphor bronze gold-plated
Material:	case and button: PES, meets UL 94 V-0, washable
Mounting:	on pc-board
Soldering conditions:	wave-soldering – max.: 7 sec, 250 °C \pm 5 °C max.: 5 sec, 270 °C \pm 5 °C
ESD resistance:	> 8 kV (between button and terminals)

Accessories:

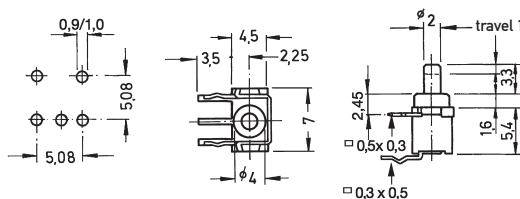
Plastic caps

black	KF 4105
grey	KF 4107
red	KF 4109
white	KF 4110

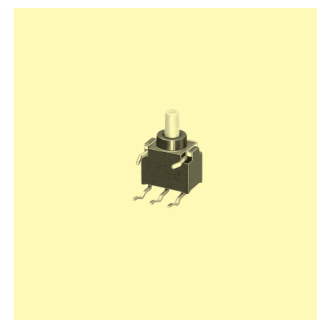


Models: Switching functions: when looking at the brand name, the normally closed contact is on the right hand side.

SPDT
FP 1 F – RA mom – on



washable



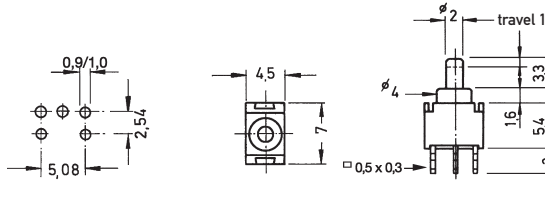


Microminiature Pushbutton Switches ESD proof

Models: Switching functions: when looking at the brand name, the normally closed contact is on the left hand side.

SPDT
FP 1 F

on - mom



washable



DPDT
FP 2 F

on - mom

